

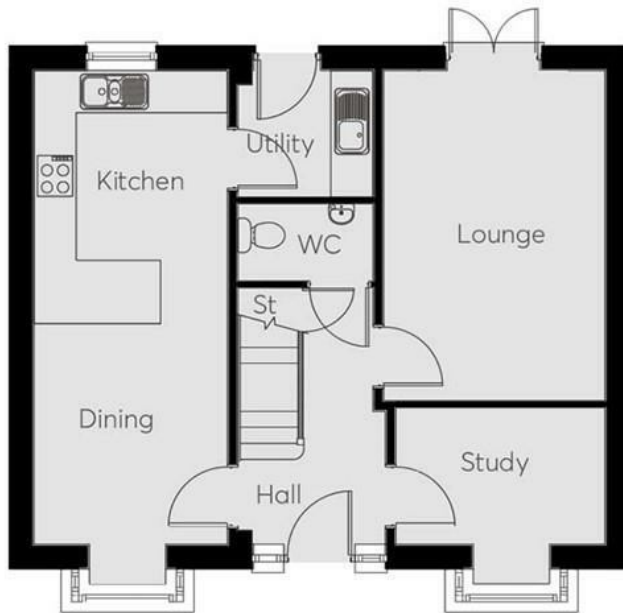


91 Highbrook Way, Lydney, Gloucestershire, GL15 4BY

£1,695 Per Calendar Month



- Available 11/03/2026
- Open plan
- Detached
- Executive four bedroom home
- Stunning location
- holding deposit: £389



Directions

THE PROPERTY

Available 11/03/2026

'The Bamford' is a four bedroom detached home with open plan kitchen/diner & utility, lounge, ground floor WC, family bathroom and en-suite to master bedroom. All carpets, curtains and light fittings provided as well as landscaped gardens.

Take a stroll into the historic market town of Lydney and browse amongst the local shops and cafes. Relax in Bathurst Park or take in the historic Harbour for spectacular views across the Severn Estuary. From Lydney, the 'Gateway to the Forest', discover the wide range of activities available throughout the Forest of Dean, including kayaking, zip-wires, caves, mountain biking and cycle tracks. Or for something more relaxing, take the Dean Forest railway and enjoy the many walks and spectacular views.

Enjoy life in Lydney, follow the A48 along the Severn Valley from Chepstow, with its historic riverfront Norman Castle, to the Cathedral City of Gloucester, with its historic dock area and Gloucester Quays shopping outlet. As the river narrows towards Gloucester, watch the annual Severn Bore or join the surfers and canoeists as the wave rises and gathers momentum.

The community is fast evolving and with it a host of amenities that we are providing from allotments to an outside gym, bike hire, walking and jogging trails, to a gorgeous wetland full of natural wildlife and all of our residents' doorstep.

****Please note the photos are of a similar property and the finish, size and layout of rooms may differ from that shown****

SITUATION